

West Yorkshire Pathfinder
IDVA Service

West Yorkshire Pathfinder IDVA Service

Professionals' Handbook 2025



West Yorkshire Pathfinder IDVA Service

Contents

Who are we?	2
Our mission	3
Key aims	4
Our objectives	5
Our support	5
Counter allegations	8
How to make a referral	9
Referral form	10
Contact us	10

Who are we?

Staying Put is leading on the new Family Court Independent Domestic Violence Advocate (IDVA) pilot delivery model of the West Yorkshire Pathfinder Partnership (WYPP). We work in collaboration with West Yorkshire partners Leeds Domestic Violence Service (LDVS), represented by Leeds Women's Aid and Behind Closed Doors, WomenCentre, Pennine Domestic Abuse Partnership and Wakefield (provider to be confirmed.)

Areas we serve

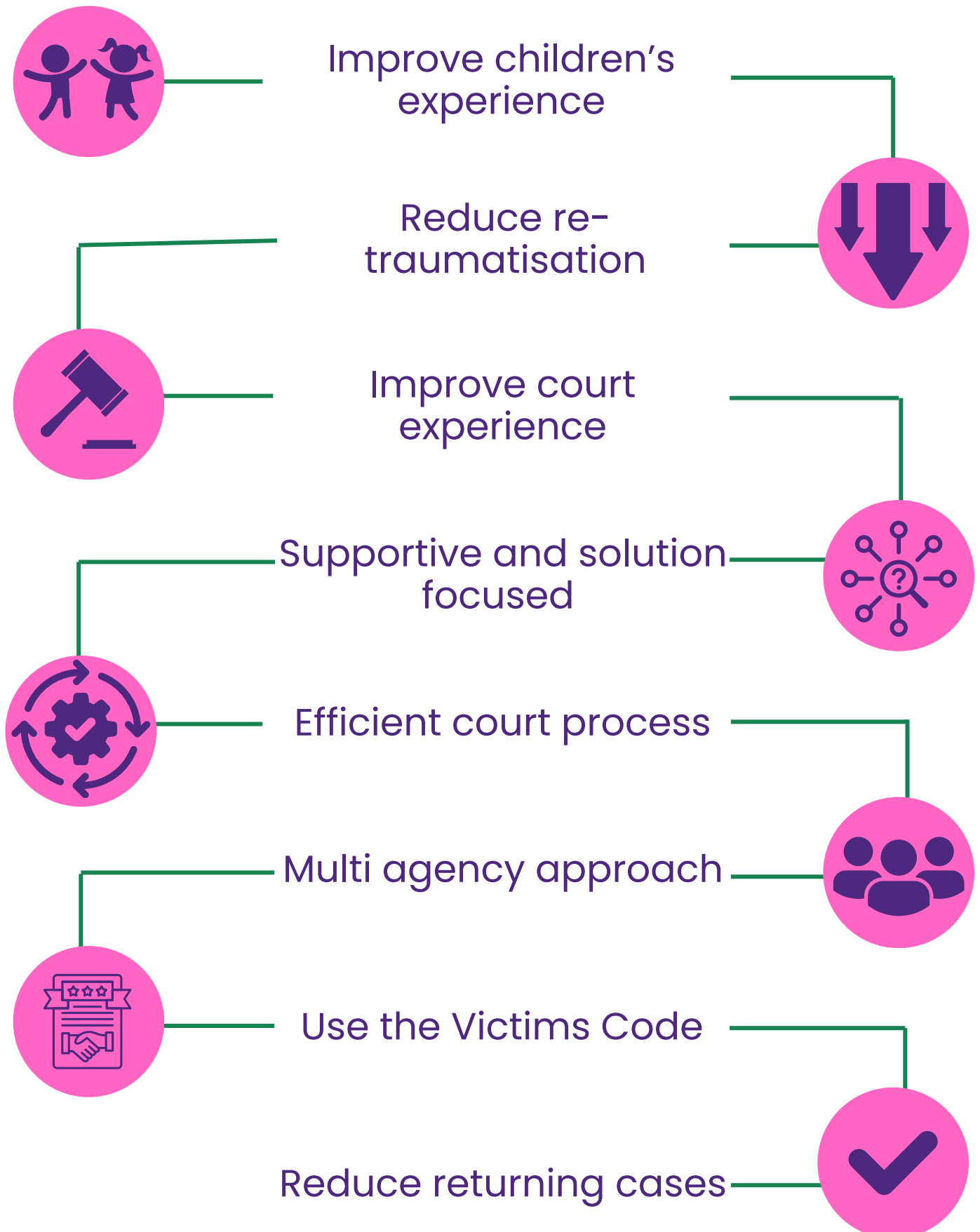


Our mission

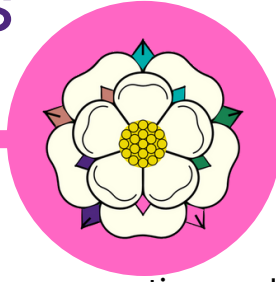


To improve family's experience
through the family court
system.

Key aims



Our objectives



A key objective will be to implement a supportive and solution focused approach that integrates family courts with wider support services. This will ensure that survivors receive comprehensive assistance, addressing their needs beyond the courtroom. The programme also prioritises strengthening multi-agency coordination to create a cohesive and effective response to domestic abuse cases by:

- Ensuring flexible IDVA support
- Providing early intervention
- Improving the voice of the child
- Supporting survivors post-court as required by signposting to suitable community services
- Feeding into the Family Court Pathfinder evaluation

Our support



Risk management

A Risk Assessment is conducted to identify any potential safety concerns and to put safety measures in place when necessary.

We will use tools such as the DASH to identify risks. This will ensure we provide the right support and safety planning for the individual.

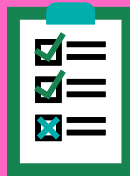
Our support



Safety planning

Safety planning comes in a variety of forms and can include:-

- Legal Orders
- Ring doorbells
- Safety Apps
- Securing technology and devices



Needs assessment

We will complete a Needs Assessment to identify and understand your needs. The aims of this is to highlight areas for us to be aware of, such as intimidation or disability and access needs.



Support planning

Identifying what support the individual needs during the court process- including emotional support and making the individual more comfortable whilst attending court.

Our support



Support in Court

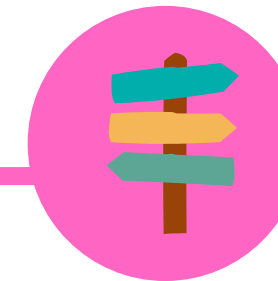
Using the Support Planning process and providing emotional and practical support whilst in court.



Special measures in court

This includes but is not limited to:

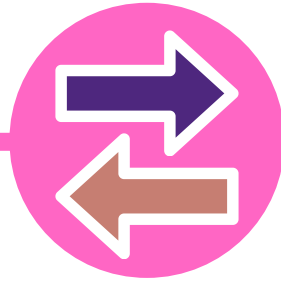
- Providing screens
- Video testimony
- Accessing the court through different entrances
- Accessing empty courts so the individual is not overwhelmed
- IDVA presence throughout the hearing to provide emotional support



Signposting to other support

Signpost to more appropriate services based on needs

Counter allegations

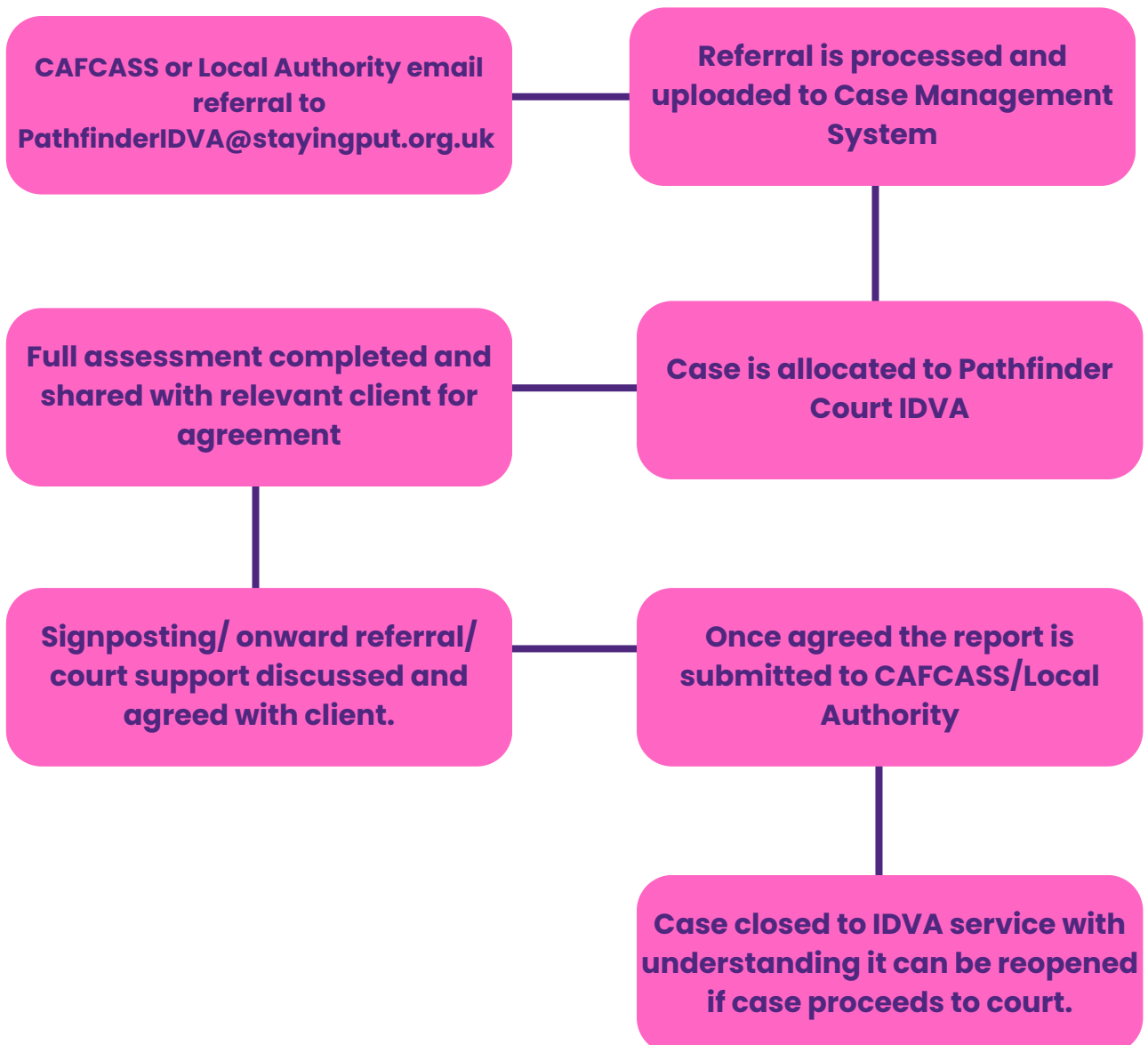


Where there are counter allegations of domestic abuse within the relationship both parties may be referred to the Pathfinder IDVA Service. If appropriate, we will make contact with both parties to assess (using the Respect Toolkit) who is the primary victim and who is the primary aggressor.

There will be times when a referral to both parties may be deemed inappropriate, for example if one of the parties is assessed as high risk, or where one of the parties is already known to domestic abuse services as an established perpetrator.

How to make a referral

Please note: only CAFCASS or local authority can make a referral.



Referral form

To make a referral, please visit our website at

www.stayingput.org.uk/pathfinder

or scan the below QR code.

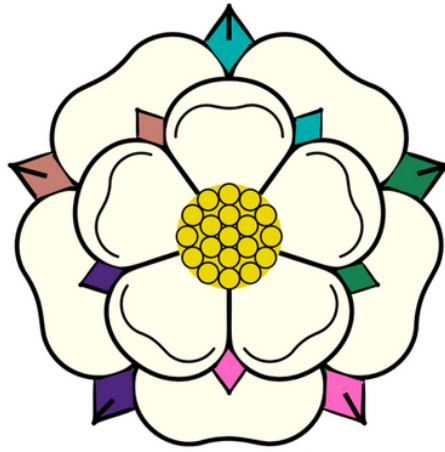


Contact us



Email

pathfinderIDVA@wypp.org.uk



West Yorkshire Pathfinder
IDVA Service

**Putting you and your
children's voices at the
heart of what we do.**